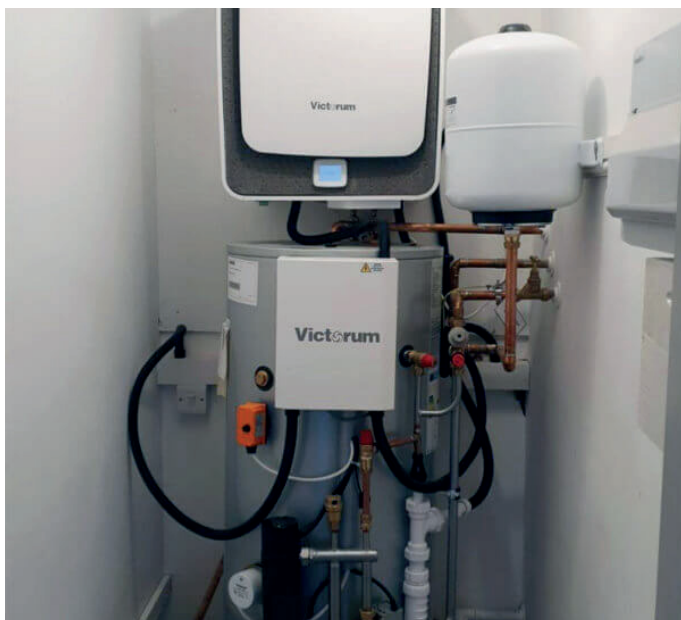


General Information

Site Name	Latimerhouse, St Catherines Close, Birmingham
Number of Units	14
Product Installed	Victorum EAHP
Product Status	Complete



Design Considerations

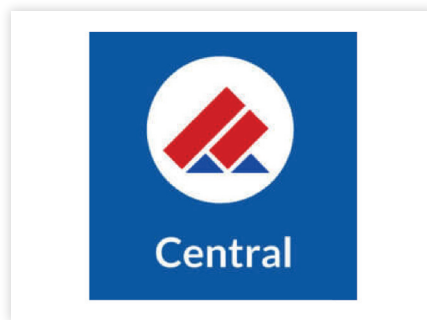
The apartments need a highly efficient renewable technology heating and hot water solution. The Victorum worked as it did not require any outside space and the installation of another heat source. The units were located in the cupboard in each apartment. They heated the apartment using steel panel radiators. The hot water provided for using Joule's Victorum pre-plumbed hot water cylinder.

When Damson Homes were looking for standalone heating and hot water solution to meet SAP requirements for their newly built apartment complex, they turned to Joule for a solution that could meet their specification needs and support their sustainability goals for the project. The developer was keen to use more sustainable energy to power all aspects of home comfort. The Joule Victorium exhaust air heating and hot water solution provided the perfect solution for the project.

Project Team



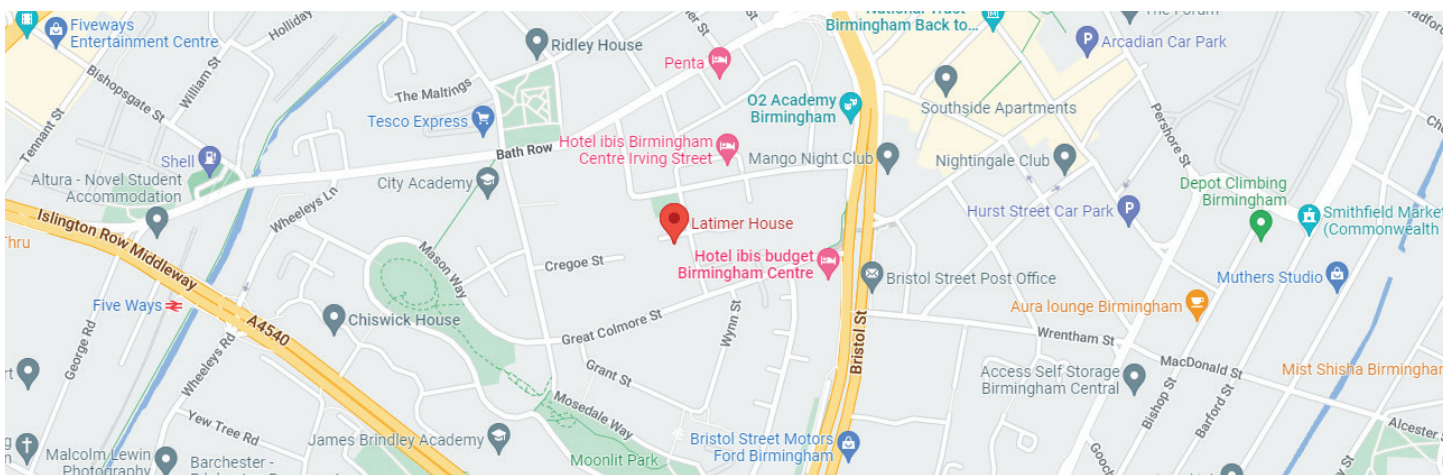
Main Contarctor



Mechanical Contarctor

Address

Latimerhouse, St Catherines Close, Ladywood, Birmingham, UK



For more information visit:



www.joule.ie



www.jouleuk.co.uk