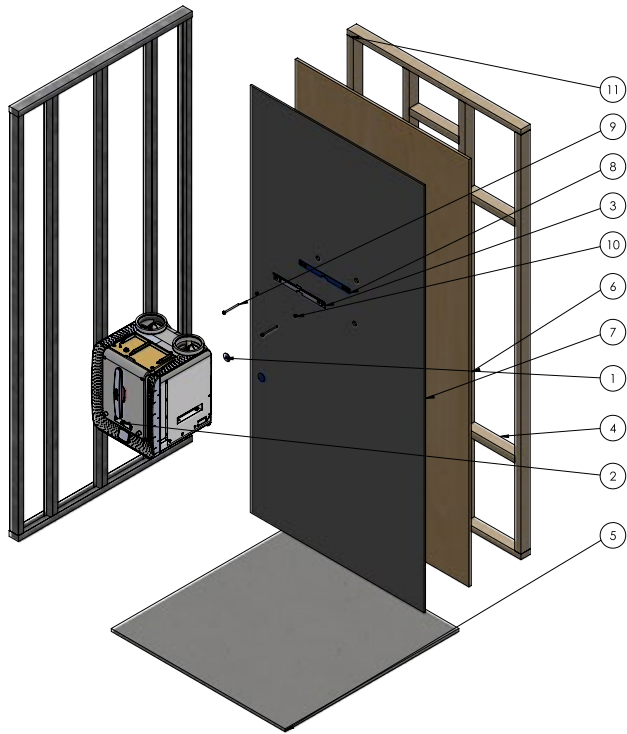
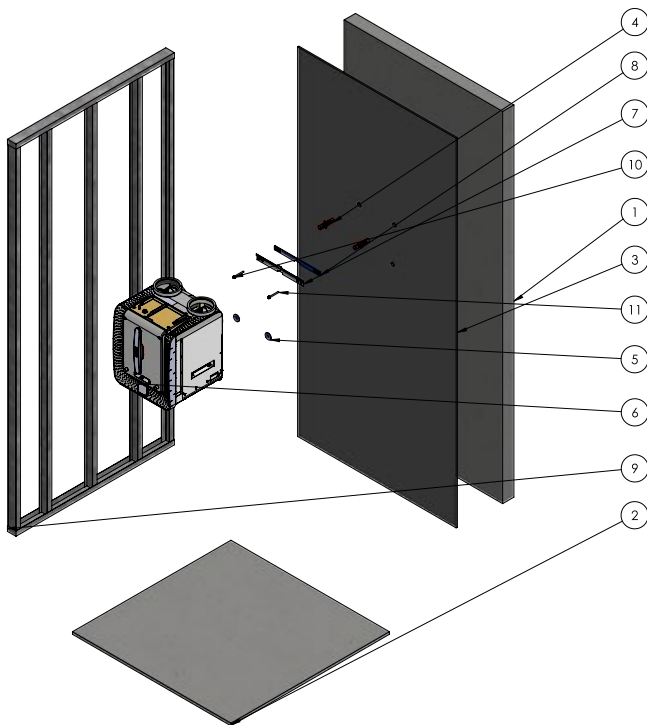


Mounting Instruction Stud Wall

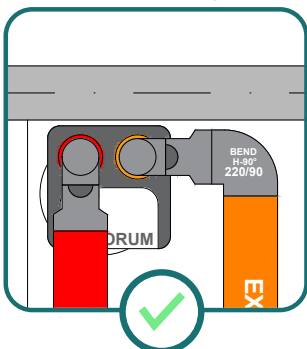


	Description	Part No.	QTY
1	Victorium Rubber Damper Bottom Circle	TZV-MOUNT00-B	2
2	Joule Victorium Vhp (le)	HHH-0-0000-VHP	1
3	Victorium Wall Bracket	TZ-W-00-COMP-1	1
4	400mm Timber Noggin	n/a	7
5	Concrete Floor Slab	n/a	1
6	3/4" Plywood Sheet	n/a	1
7	Standard Wall Finish	n/a	1
8	Victorium Mounting Bracket Rubber Damper Top	TZV-MOUNT00-T	1
9	B18.2.3.9m - Heavy Hex Flange Screw, M8 X 1.25 X 80 --22n	n/a	2
10	B18.2.2.4m - Hex Flange Nut, M8 X 1.25 --N	n/a	2
11	Timber Stud Wall	n/a	4

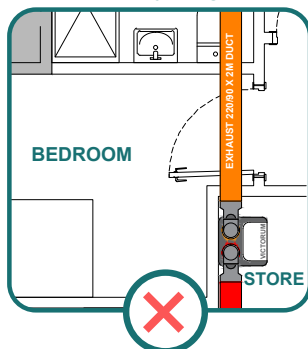


	Description	Part No.	QTY
1	Block Wall	n/a	1
2	Concrete Floor Slab	n/a	1
3	Standard Wall Finish	n/a	1
4	Rawplug-Wall Fixing Bolt Plugs	TZ-W-00-COMP-1	2
5	Victorium Rubber Damper Bottom Circle	TZV-MOUNT-00-B	2
6	Joule Victorium	HHH-0-0000-VHP	1
7	Victorium Wall Bracket	TZ-W-00-COMP-1	1
8	Victorium Mounting Bracket Rubber Damper Top	TZV-MOUNT-00-T	1
9	Metal Stud Wall	n/a	1
10	B18.2.3.9m - Heavy Hex Flange Screw, M8 X 1.25 X 80 --22n	n/a	1
11	B18.2.3.9m - Heavy Hex Flange Screw, M8 X 1.25 X 25 --25n	n/a	1

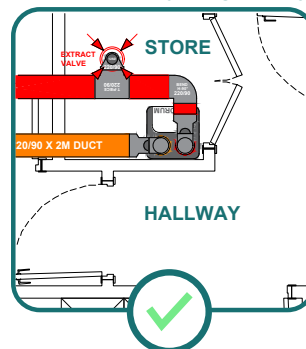
Solid External Party Wall



Internal Wall Adjoining Bedroom



Internal Wall Adjoining Hallway



Internal Wall Adjoining Utility

